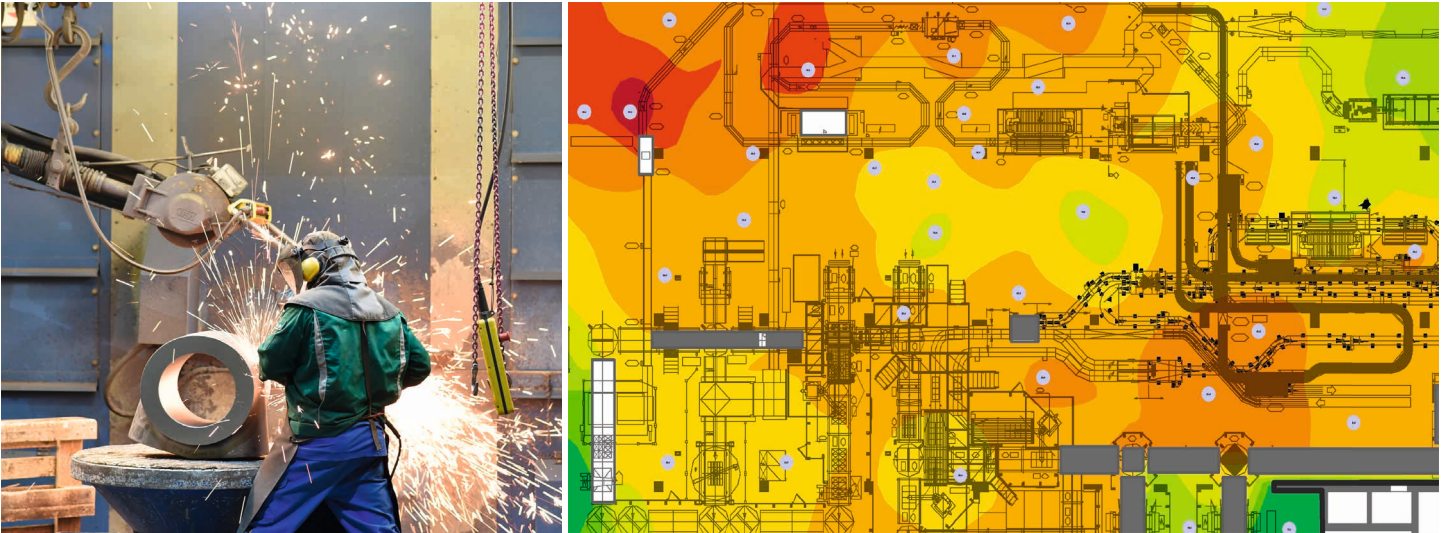


SoundPLAN[®]

manda



Highlights SoundPLANmanda

Mapping and analyzing tool

for noise pollution and other environmental workplace hazards

Data import interface

for georeferenced measurement data - display it with interpolated color-coded iso contour lines

Flexible analysis

to combine several measurements with user-definable formulas to show, for example, the level change, or the level above a limit value

Analyze the noise load of a worker

according to the Occupational Health and Safety Act (OSHA), the National Institute for Occupational Safety and Health (NIOSH) and further European legislation

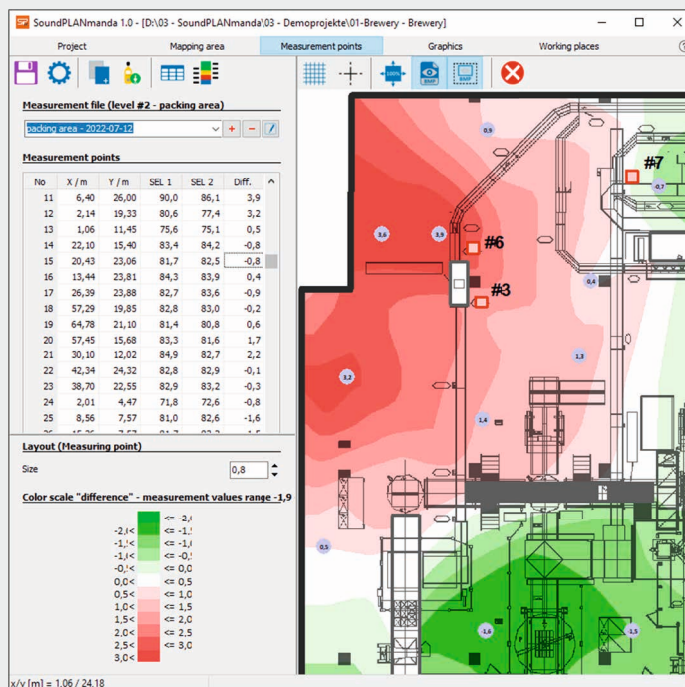
Easily report noise and other environmental workplace hazards in color-coded maps

Introducing SoundPLAN_{manda}, our state-of-the-art software to map and analyze noise pollution, and other environmental workplace hazards (e.g. temperature or air pollution) based on measurements. It is the perfect tool for occupational health and safety experts to help you measure and report noise in workplaces, including factories and industrial sites, in both indoor and outdoor working areas.

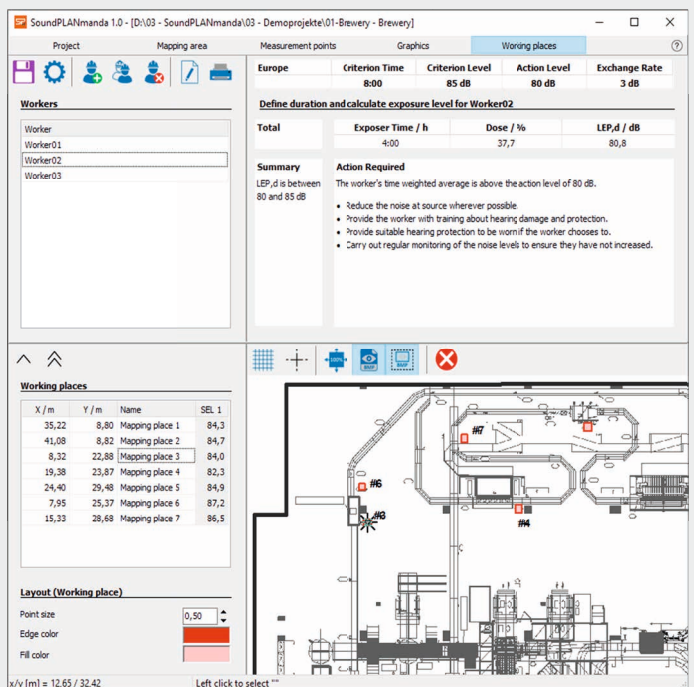
Key features:

- Easily define manually the noise levels using our software (or import them with the measurement data) and instantaneously get a color-coded map with iso-lines, using our intelligent and fast interpolation algorithms.
- The results documentation is presented in easy-to-use map layouts, but with multiple possibilities to adapt to the requested user requirements, making life as simple as possible.
- Projects are clearly structured with the possibility to have multiple mapping areas (for example for different floors), unlimited amounts of measurement data, and user-definable value definitions and scales.

With our additional noise evaluation module, it is possible to check the noise load for specific workers, even for those working at different working places. The evaluation is based on the Occupational Health and Safety Act, (OSHA), the National Institute for Occupational Safety and Health (NIOSH) and European legislation. If noise limits are exceeded hearing protection is introduced to protect the workers. The results are documented in a well-structured report, with all required information and assessment.



Measurement data input/import and color-coded result display



Noise load evaluation for specific workers and workplaces

Software Designers and
Consulting Engineers
Experts for Noise Control
and Room Acoustics



SOUNDPLAN GMBH
Etzwiesenberg 15
71522 Backnang
Germany

phone +49.7191.9144-0
mail@soundplan.de
www.soundplan.eu